



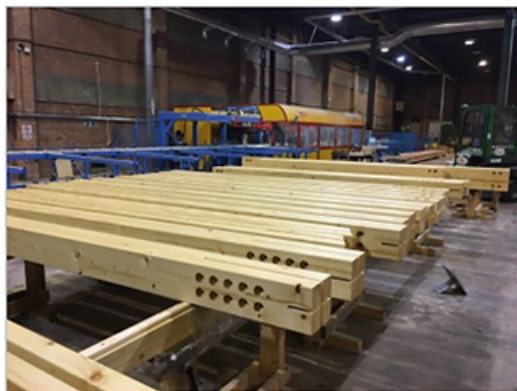
There is still time to feature in our spring issue and with high levels of new subscribers, #STMagUK is the perfect... <https://t.co>

Constructional Timber - The UK's leading Engineers in Timber – Invest in Hundegger

Through the leadership of Martin Daws, and the in-house skills of his internal and on-site team, "Constructional Timber (Manufacturers) Limited" near Barnsley specialise in providing engineered timber solutions and stock Glulam for a wide range of projects both large scale and domestic.

In Mid-2019, they had the Hundegger K2 Industry machine installed, the strategic investment was made after a good deal of research, and visiting many supply partners and Hundegger users in Germany and Switzerland.

Chris Osborne from Hundegger UK comments "It was a pleasure to take Martin and his technical team on this journey to make sure that their investment was well researched and supported. Of course, the end result being that one of Hundegger's largest K2 machines is now installed in Constructional Timber. The machine will process any timber engineered building around the UK, with speed and accuracy using the latest materials available"



The success and optimisation for getting the best result from the K2 is by "in house" designers working with SEMA CAD/CAM, that produces files that load directly into the K2 machine. Making the most complex of structures efficiently.

Comments Martin Daws "The addition of the Hundegger K2 Industry to our business has undoubtedly increased our manufacturing scope and capacity to provide an unrivalled service to the Timber Engineering market within the UK. It is undoubtable that this investment will enhance our company's position within our business sector. We are very grateful to all at Hundegger for their efficient and professional service throughout the procurement and installation period with continued after sales support".

Constructional Timber can cater for the full package in terms of design, manufacture, supply & fit for a variety of laminated structures in Glulam, CLT, BauBuche, LVL, Green Oak Buildings and Feature trusses.

Website - <http://www.constructionaltimber.com/>

Email – sales@constructionaltimber.com

Search...

GO

Download
MediaPack



Our latest media pack with forward features and advertising opportunities.

Download